

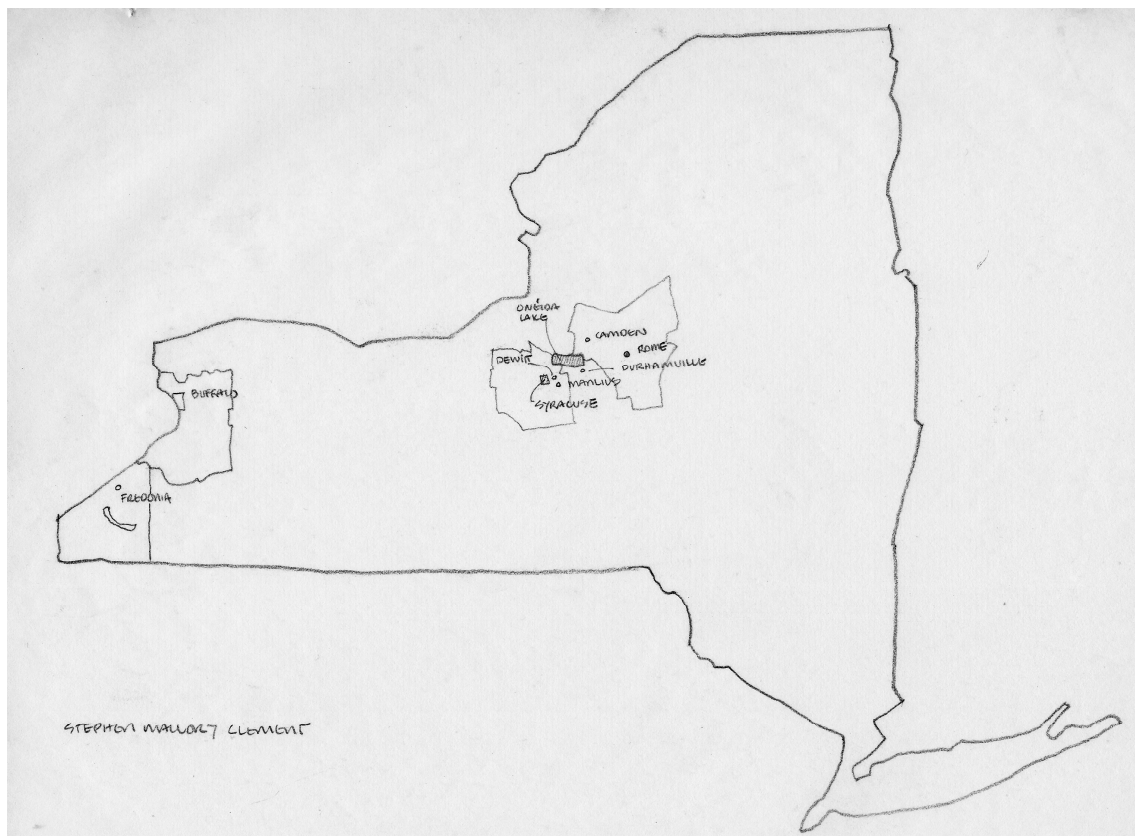
STEPHEN MALLORY CLEMENT (1825-1892)
SARAH ELIZABETH LEONARD (1824-1891)



SMC1 Strongbox

A handwritten signature in cursive script, reading "S. M. Clement", on a piece of aged, yellowed paper.

STEPHEN MALLORY CLEMENT (1825-1892)
SARAH ELIZABETH LEONARD (1824-1891)



PWC

Map of important places in the life of Stephen Mallory Clement



PWC 1967

The farm in Manlius Center, Onondaga County, New York

*Stephen Clement¹, Frederick Clement², Stephen Mallory Clement³, Stephen Merrell Clement⁴,
Norman, Edith, Merrell, Harold, Marion, Stuart⁵*

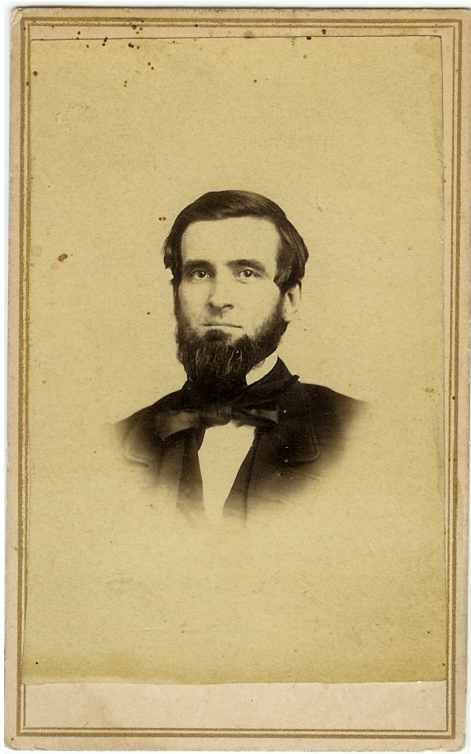
STEPHEN MALLORY CLEMENT (1825-1892)

SARAH ELIZABETH LEONARD (1824-1891)

Camden Camden County N.Y.
28 June 1848
I will herein say to all whom it may
concern that Mr. Stephen Clement the owner
of this has been in my store for about eighteen
months last past and a part of the time as a
partner. but on account of ill health leaves me
but I can most cordially say that he has
my confidence as a man of unquestionable integ-
rity and worth and for his own qualities has
few superiors and would recommend him
to the Merchants community
H. J. Miner

SMC1 Strongbox

Letter of recommendation from Hiram J. Miner, in 1848, regarding his employment of Stephen Mallory Clement, for eighteen months in his dry goods store in Camden, NY. Stephen then worked in Rome, NY in Issac T. Miner's dry goods store (Hiram's brother). Hiram started Miner's bank in Utica in 1849, then moved the bank to Fredonia, NY the next year. Stephen moved there the same year, probably drawn there by Hiram. Stephen first started his own dry goods store in 1850, and after five years sold his interest to his two brothers, Frederick, Jr & Thomas Burr. He went to work for Miner's Bank, as Cashier, for one year.



SELC Photo Album



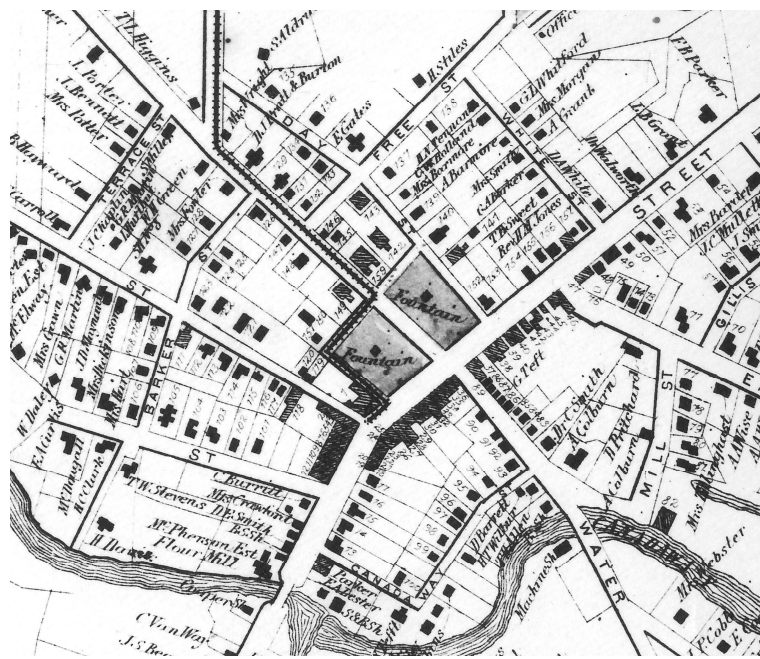
SELC Photo Album

Stephen Clement¹, Frederick Clement², Stephen Mallory Clement³, Stephen Merrell Clement⁴,
Norman, Edith, Merrell, Harold, Marion, Stuart⁵

STEPHEN MALLORY CLEMENT (1825-1892)
 SARAH ELIZABETH LEONARD (1824-1891)



Photo of CJC/SMCIII Album



Beers Atlas

Map of downtown Fredonia, NY

*Stephen Clement¹, Frederick Clement², Stephen Mallory Clement³, Stephen Merrell Clement⁴,
 Norman, Edith, Merrell, Harold, Marion, Stuart⁵*

STEPHEN MALLORY CLEMENT (1825-1892)
SARAH ELIZABETH LEONARD (1824-1891)



Darwin R. Barker Library, Fredonia/Douglas Shepard

View of Lafayette Park, Fredonia, NY painted by Julia Lovina Parker. SMC carried a black & white copy of a similar painting (there have been several) in his date book of 1869, the year he moved to Buffalo. In the painting, the roof & chimney of the Clement house can be seen to the left of the Episcopal Church tower (far right).



SMC1 Strongbox

This photo of another painting, "Flag of the Union," was carried by SMC1 in his date book of 1869.

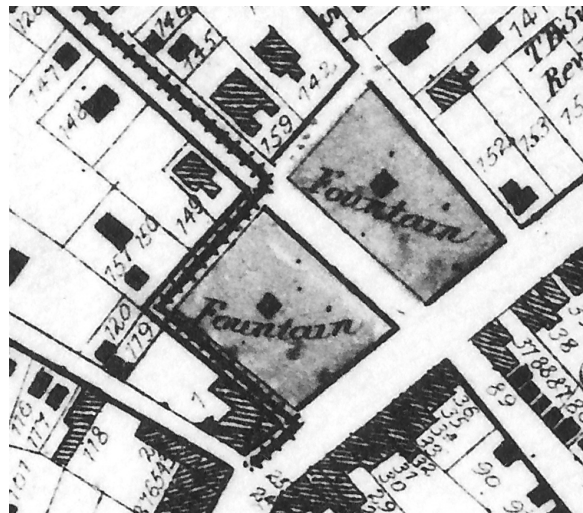
*Stephen Clement¹, Frederick Clement², Stephen Mallory Clement³, Stephen Merrell Clement⁴,
Norman, Edith, Merrell, Harold, Marion, Stuart⁵*

STEPHEN MALLORY CLEMENT (1825-1892)
SARAH ELIZABETH LEONARD (1824-1891)



Detail of house portrait: Photo CJC/SMCIII Album

Stephen Mallory Clement house at 21 Day Street, Fredonia, New York. This was a portrait of the house, with the family members arrayed in front: SMC1 on the left porch, with Charles William (1861-1866) on his lap, Sarah Elizabeth Leonard Clement to the right of the front door, Stephen Merrell (1859-1913) on a rocking horse on the right porch, and Henry Clay (1853-1867), the oldest, in front of the fence.



21 Day Street appears to the left of the lower word "Fountain," with the number 151, and a barn numbered 150 (the 1's look like 7's).

*Stephen Clement¹, Frederick Clement², Stephen Mallory Clement³, Stephen Merrell Clement⁴,
Norman, Edith, Merrell, Harold, Marion, Stuart⁵*

STEPHEN MALLORY CLEMENT (1825-1892)
SARAH ELIZABETH LEONARD (1824-1891)



Henry Clay Clement (1853-1867)



*Charles William Clement (1861-1866)
Stephen Merrell Clement (1859-1913)*



Henry Clay Clement (1853-1867)

Known as Clay, he appears to have had prominent ears, which he hid behind a full head of hair.



*Stephen Clement¹, Frederick Clement², Stephen Mallory Clement³, Stephen Merrell Clement⁴,
Norman, Edith, Merrell, Harold, Marion, Stuart⁵*

STEPHEN MALLORY CLEMENT (1825-1892)

SARAH ELIZABETH LEONARD (1824-1891)

S. M. CLEMENT'S
CASH STORE,
IN FREDONIA,
Is the Cheapest Store in Chautauque County.

The attention of Purchasers is solicited to his extensive Stock of

FALL AND WINTER GOODS,
Now opening—which have been selected with due care, as regards *Styles and Prices*, and need only to be seen to find *Ready Sale*. His Stock consists in part of

DRY GOODS!
BLACK AND FANCY COLORED DRESS SILKS,
PLAIN AND FIGURED POPLINS,
MERINOES, CASHMERES, PARAMATTES, ALPACCAS,
PLAIN AND FIGURED DELAINES,
BROCHE SILK, CASHMERE AND WOOL, LONG AND SQUARE SHAWLS,
EMBROIDERED DRAPERY, COLLARS, EDGINGS AND INSERTINGS.
CLOTHS, CASSIMERES,
VESTINGS AND TRIMMINGS, IN GREAT VARIETY.
WOOLLEN AND COTTON FLANNELS,
SEAMLESS BAGS,
Brown and Bleached Sheetings and Shirtings, from 3-4 to 2½ Yards Wide:
and all articles belonging to the DRY GOODS trade.
CARPETING AND FLOOR OIL CLOTH,
HATS AND CAPS,
Men's Fashionable Silk, Fur and Wool Hats; Men's and Boys' Silk, Plush and Cloth Caps,
Children's Hats, Caps, &c. &c. &c.
BOOTS AND SHOES.
Men's and Boys' Calf, Kip and Stoga Boots and Brogans; Women's and Misses' Kid and Morocco
Buskins, Boots and Gaiters; Women's and Misses' Calf Boots, Children's Shoes,
Rubber Boots and Buskins, Rubber Over Shoes, &c. &c.
Groceries.
Green and Black Teas, Coffee, Raisins, Cassia, Nutmegs, Pepper, Spice, Sugar, Syrup, Molasses,
Tobacco, and all articles belonging to the **GROCERY TRADE.** Crockery, Hardware, Nails,
Paper Hangings, Oils, Dye Stuffs, Fish, Flour, Salt, &c. &c.
NEW GOODS RECEIVED NEARLY EVERY WEEK.
FREDONIA, SEPT. 19, 1851.
Advertiser Print, Fredonia.

SMC1 Strongbox

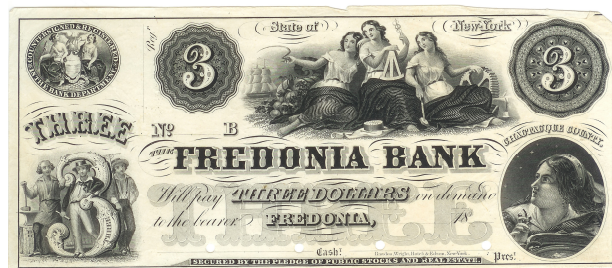
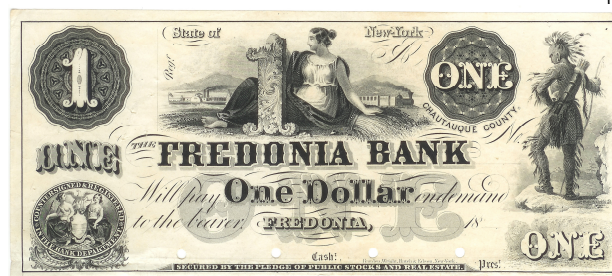
An 1851 flyer for the store. Note the wild variety of typefaces, including logs
to announce: "S. M. Clement's"

*Stephen Clement¹, Frederick Clement², Stephen Mallory Clement³, Stephen Merrell Clement⁴,
Norman, Edith, Merrell, Harold, Marion, Stuart⁵*

STEPHEN MALLORY CLEMENT (1825-1892)
 SARAH ELIZABETH LEONARD (1824-1891)



Website postcard



SMC1 Strongbox



Views of old Fredonia, New York

*Stephen Clement¹, Frederick Clement², Stephen Mallory Clement³, Stephen Merrell Clement⁴,
 Norman, Edith, Merrell, Harold, Marion, Stuart⁵*

STEPHEN MALLORY CLEMENT (1825-1892)
SARAH ELIZABETH LEONARD (1824-1891)



An early bank in Sturbridge Village



SMC1 Strongbox

Stephen Mallory Clement (1825-1892)

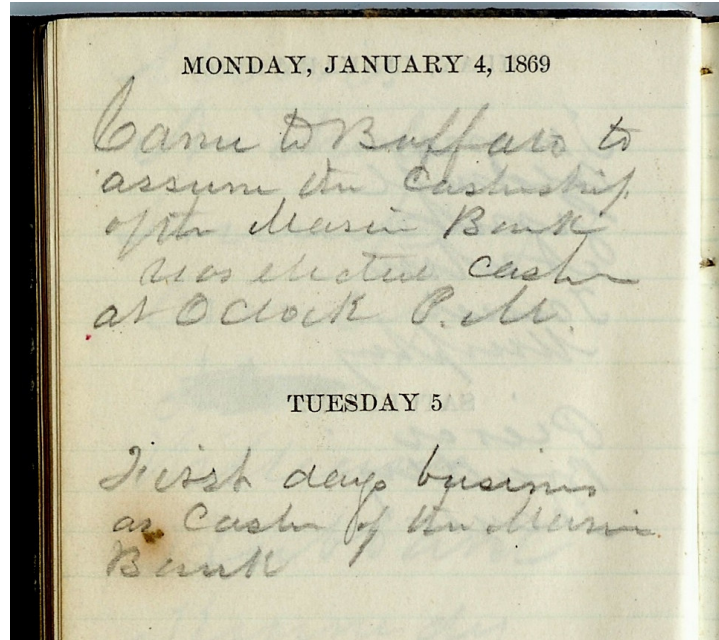


SMC1 Strongbox

Sarah Elizabeth Leonard (1824-1891)

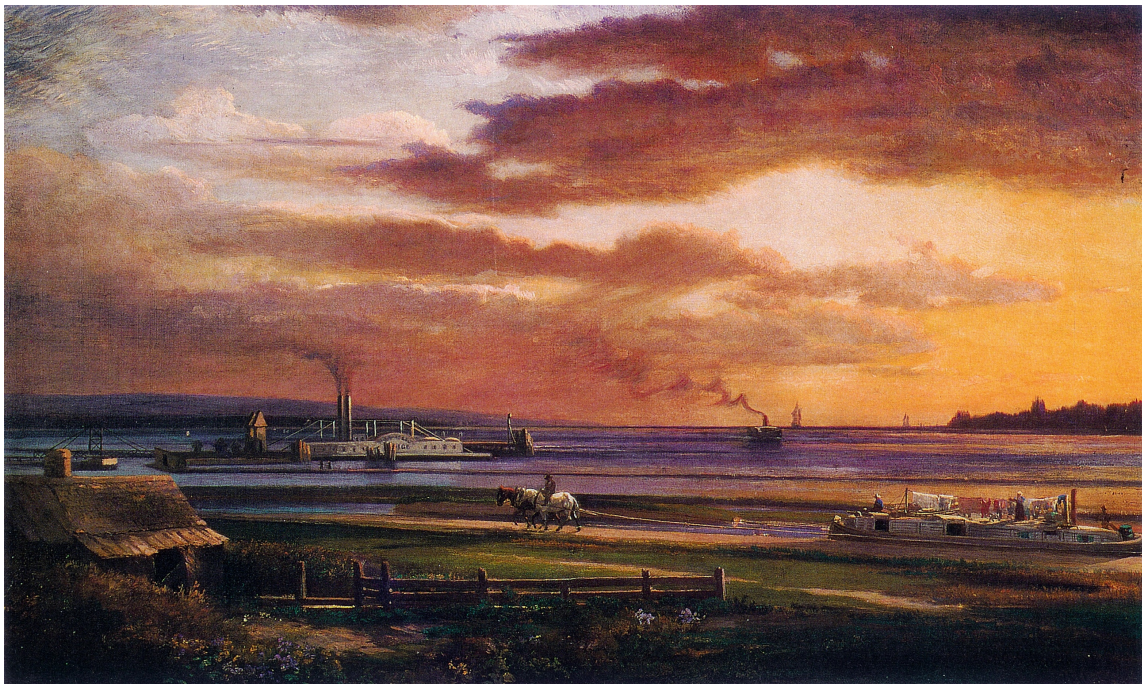
*Stephen Clement¹, Frederick Clement², Stephen Mallory Clement³, Stephen Merrell Clement⁴,
Norman, Edith, Merrell, Harold, Marion, Stuart⁵*

STEPHEN MALLORY CLEMENT (1825-1892)
SARAH ELIZABETH LEONARD (1824-1891)



SMC1 Strongbox

Stephen Mallory Clement's date book, from 1869, signaling his start at The Marine Bank. He liked to start his new endeavors on or near the 1st of the month.



Albright-Knox Art Gallery

"Buffalo Harbor from the Foot of Porter Avenue", by Lars G. Sellstedt (1819-1911), 1871. Note the canal boat coming into terminus of the Erie Canal from Black Rock to the north.

*Stephen Clement¹, Frederick Clement², Stephen Mallory Clement³, Stephen Merrell Clement⁴,
Norman, Edith, Merrell, Harold, Marion, Stuart⁵*

STEPHEN MALLORY CLEMENT (1825-1892)
 SARAH ELIZABETH LEONARD (1824-1891)



SMC2 to HTC1 to PWC

A Marine Bank note from its founding year of 1850. Bank notes were treated as checks drawn on the bank, and like modern checks required a signature (or two) to be legal tender. In this case it was signed by the president, George Palmer, and the cashier, Hiram E. Howard.



Marine Bank 1855-1881



Palmer's Views

Marine Bank / Marine National Bank 1881-1913

*Stephen Clement¹, Frederick Clement², Stephen Mallory Clement³, Stephen Merrell Clement⁴,
 Norman, Edith, Merrell, Harold, Marion, Stuart⁵*

STEPHEN MALLORY CLEMENT (1825-1892)
SARAH ELIZABETH LEONARD (1824-1891)



Buffalo & Erie County Historical Society



CJC/SMCIII Album

Charles W Goodyear house at 703 Delaware Ave.: similar to the first 737 Delaware Ave, built by SMC1 in 1874.

The second 737 Delaware Ave, built by SMC1 in 1885.

Located on the east side of Delaware Avenue, across from the Dexter Rumsey house, and Westminster Church. Summer Street was one house to the north (left). His neighbors were Edward Michael, to the north, and Charles W. Goodyear and John N Scatcherd, to the south. Stephen Clement bought the land from C.A. Sweet in 1872, and built a wooden house on the site in 1874 (see 703 Delaware as a similar house). In 1884 Stephen tore his house down and built this house, living at 170 Delaware for the duration. Stephen Merrell Clement moved to 737 from 173 Summer St when his father died in 1892, and his children grew up in this house. After the new 786 was built, the house was rented until 1918, when it was sold. In 1935 it was converted to apartments, and in 1958 it was torn down to make room for a colorless insurance building.

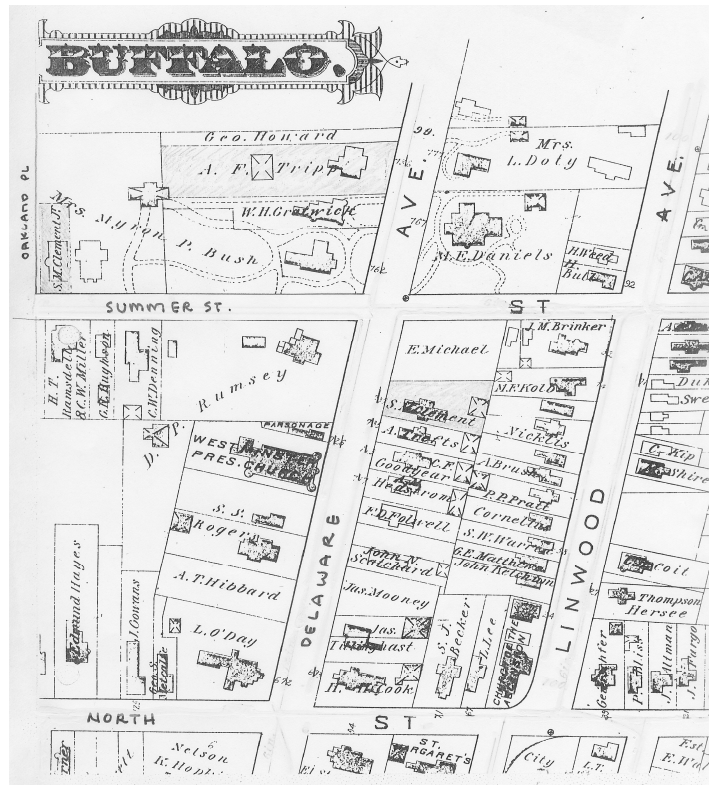
Regarding the barn to the rear, at right: Harold Tripp Clement, Sr. recalled that there was a day in the early winter when the sleighs were lowered out of the loft, and the carriages hoisted up. It was a difficult task, so he said that there was no turning back, until the process was reversed in the spring. CAC recalled that it was part of her Thanksgiving Day, in the mid 1890's, to go for a sleigh ride.

*Stephen Clement¹, Frederick Clement², Stephen Mallory Clement³, Stephen Merrell Clement⁴,
Norman, Edith, Merrell, Harold, Marion, Stuart⁵*

STEPHEN MALLORY CLEMENT (1825-1892)
SARAH ELIZABETH LEONARD (1824-1891)



CTC's Grandchildren's Album



S. S. Mitchell

Detail of a Sanborn Map of c.1888: Stephen Merrell Clement's house at 173 Summer (1885), corner of Oakland; Augustus F. Tripp's house at 786 Delaware (1855), Stephen Mallory Clement's house at 737 Delaware (1885), all shaded.

*Stephen Clement*¹, *Frederick Clement*², *Stephen Mallory Clement*³, *Stephen Merrell Clement*⁴,
*Norman, Edith, Merrell, Harold, Marion, Stuart*⁵

STEPHEN MALLORY CLEMENT (1825-1892)
SARAH ELIZABETH LEONARD (1824-1891)



SMC1 Strongbox

Stephen Mallory Clement
(1825-1892)

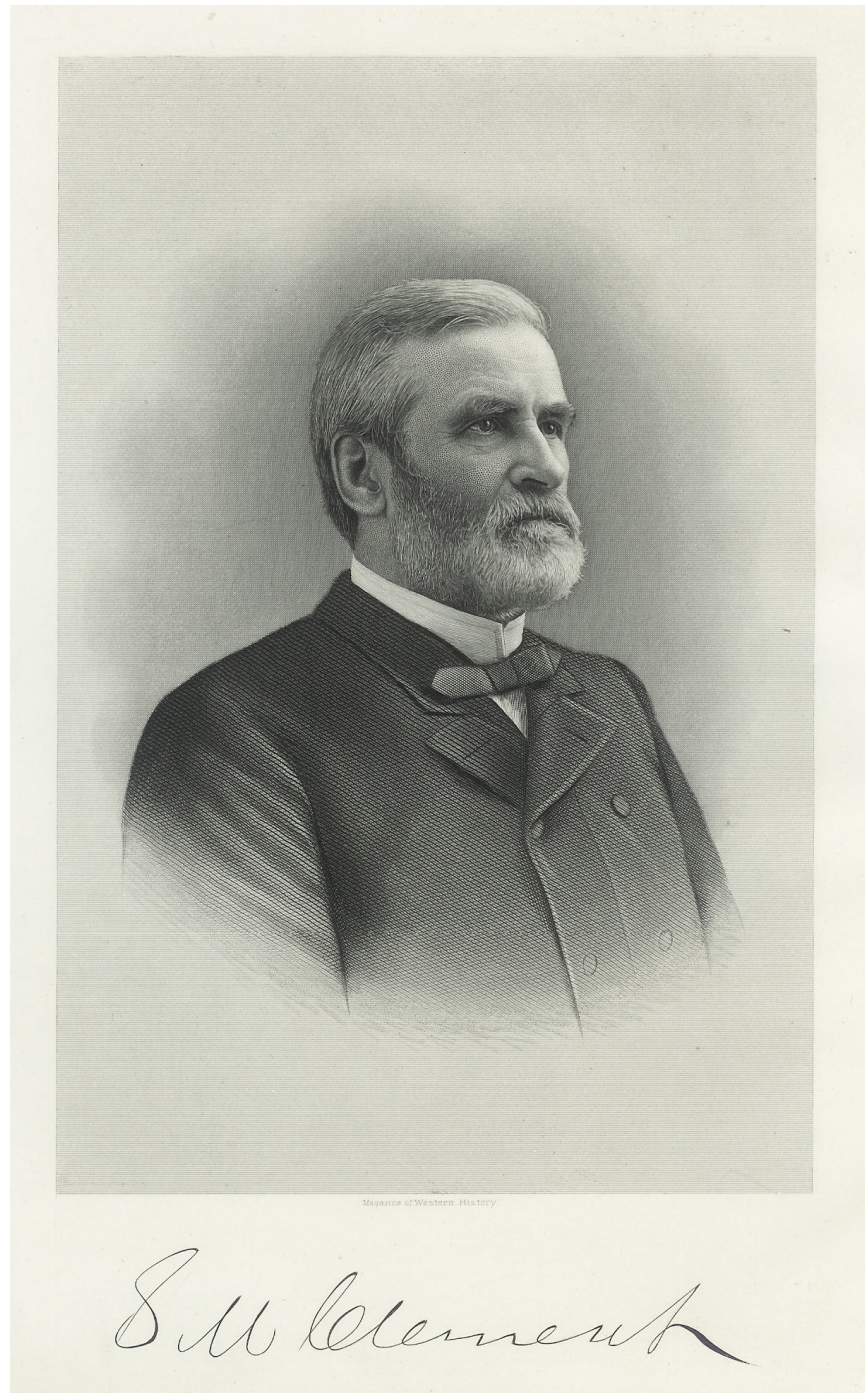


SMC1 Strongbox

Sarah Elizabeth Leonard
(1824-1891)

*Stephen Clement¹, Frederick Clement², Stephen Mallory Clement³, Stephen Merrell Clement⁴,
Norman, Edith, Merrell, Harold, Marion, Stuart⁵*

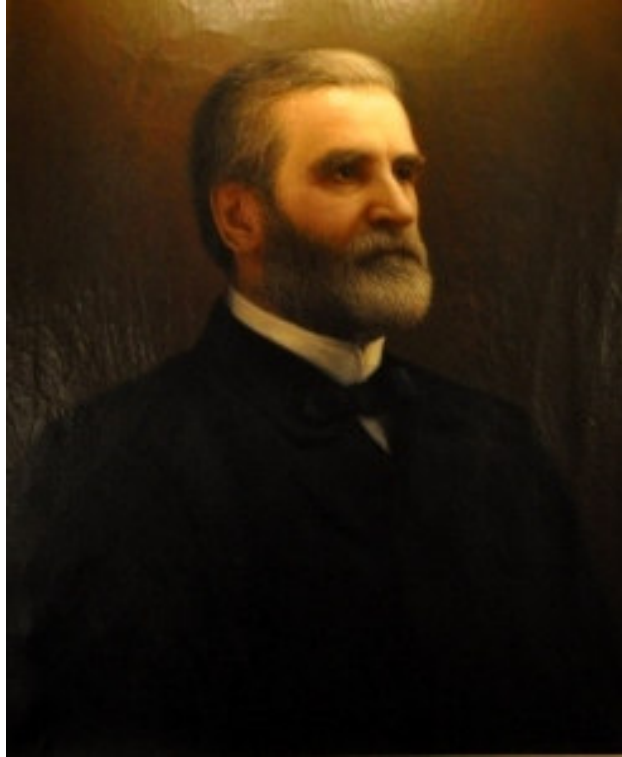
STEPHEN MALLORY CLEMENT (1825-1892)
SARAH ELIZABETH LEONARD (1824-1891)



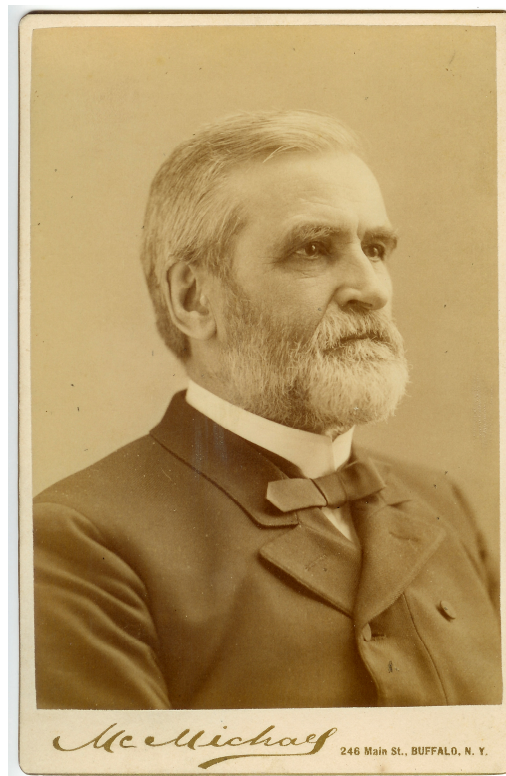
Memorial Book 1892 / Men of New York 1898

*Stephen Clement¹, Frederick Clement², Stephen Mallory Clement³, Stephen Merrell Clement⁴,
Norman, Edith, Merrell, Harold, Marion, Stuart⁵*

STEPHEN MALLORY CLEMENT (1825-1892)
SARAH ELIZABETH LEONARD (1824-1891)



SMCIII



SMC1 Strongbox

*Stephen Clement¹, Frederick Clement², Stephen Mallory Clement³, Stephen Merrell Clement⁴,
Norman, Edith, Merrell, Harold, Marion, Stuart⁵*

STEPHEN MALLORY CLEMENT (1825-1892)
SARAH ELIZABETH LEONARD (1824-1891)

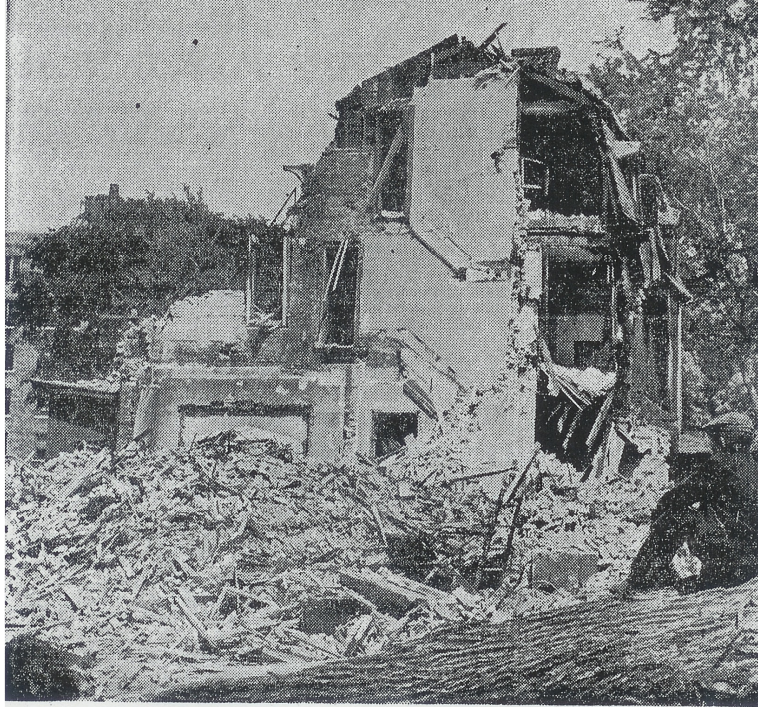


Peter Clement 1965

S. M. Clement monument, Section 4,
Forest Lawn Cemetery, Buffalo

*Stephen Clement¹, Frederick Clement², Stephen Mallory Clement³, Stephen Merrell Clement⁴,
Norman, Edith, Merrell, Harold, Marion, Stuart⁵*

STEPHEN MALLORY CLEMENT (1825-1892)
SARAH ELIZABETH LEONARD (1824-1891)



Changing times on Delaware Ave. . . . the end of the old Clement mansion
BUFFALO COURIER-EXPRESS . . . making room for the onward march of office buildings

Clement Mansion Reduced to Rubble

Finis was written to another chapter of Buffalo history last week when the Stephen M. Clement mansion, 737 Delaware Ave., was reduced to rubble.

The bricks and mortar are now being cleared away to make room for the onward march of office buildings on the avenue which was once exclusively for residences of the elite. The Clement site will be used to erect a building for the Travelers Insurance Co.

Marked Influence

Clement was one of Buffalo's bankers and financiers, whose policies had a marked influence on the city's economic structure before the turn of the century.

In 1869 Clement came to Buffalo from Fredonia, where he had founded a bank.

His first position here was as cashier of the Marine Bank, which in 1919 became the Marine Trust Co. In a short time Clement was made manager of the bank and then in 1881 was elected president of the financial firm which had been founded in 1850. He died in 1892.

When Clement built his Delaware Ave. mansion in 1885 it was one of the show places of the city. Decorators were brought in from New York to design interiors, which were replete with fine wood panelings, typical of that period.

Elegant Rooms

The three-story structure was of brick with a mansard roof. On the first floor were spacious and elegant rooms for social functions. These included a drawing room, a music room, a library, a dining room, a living room and kitchens.

The second floor consisted of

bedrooms and private quarters for the family. Servants' rooms and a large play room for the children were on the third floor.

The home was remodeled several times and then converted into apartments. The two adjacent mansions were razed and the old Clement place was flanked on either side by insurance company office buildings.

Another Mansion

Another Delaware Ave. mansion, which has escaped the wrecker's tools, also was built by a Stephen Clement, a son of Buffalo's first Stephen Clement.

The son, and his family, resided in the Clement home at 737 Delaware Ave., while their beautiful new home was being built across the street at 786 Delaware.

Stephen Clement, the younger, died in 1911 before his new home had been completed. However, his wife and children lived in it. Hundreds of Buffalo music lovers remember the delightful concerts given there.

In the living room was an aeolian organ, its pipes covered over with exquisite panelling. Also in the living room were two Steinway grand pianos and a harp. The room was so spacious that even with the array of musical instruments it comfortably accommodated a large number of persons.

Occupied by Red Cross

This Clement mansion is now occupied by the Buffalo Chapter of the American Red Cross.

Although the home of the first Stephen Clement has vanished from the scene, the Clement name is still in the forefront of today's Niagara Frontier. Clement's descendants are

prominent in business, social and civic endeavors.

Four generations of Clements have served as elders of Westminster Presbyterian Church, the first being the Marine Bank president, whose house was just razed. His great-grandson, Dr. Stephen Clement, was made an elder in 1954.

737 Delaware Avenue

*Stephen Clement¹, Frederick Clement², Stephen Mallory Clement³, Stephen Merrell Clement⁴,
Norman, Edith, Merrell, Harold, Marion, Stuart⁵*